

# Floating Cushion Sub

MODEL  
PD6-2



**C**onstruction  
**M**ining  
**W**aterwell

DRILL PRODUCTS



A key component to  
protecting your investment and  
increased drill utilization

## Function

The floating cushion sub performs two important functions; it provides a means of mating threaded connections on drill pipe without heavily loading the flanks of the threads and it also reduces shock and vibration created by the bit.

## Operation

By incorporating a certain amount of axial movement below the drill's rotary drive, the sliding spindle of the cushion sub allows the drill operator to lower the top drive with minimal force being applied to the drive spindle and drill string components. Urethane cushions utilized at the upper and lower ends of the floating spindle absorb the shock transmitted by the bit and also reduce the impact on the rotary drive bearings and gear box assembly.

## Performance

The Foremost floating cushion sub will increase your drills utilization time by removing a high percentage of the factors which affect bearing and other gear box failure related problems.

## Application

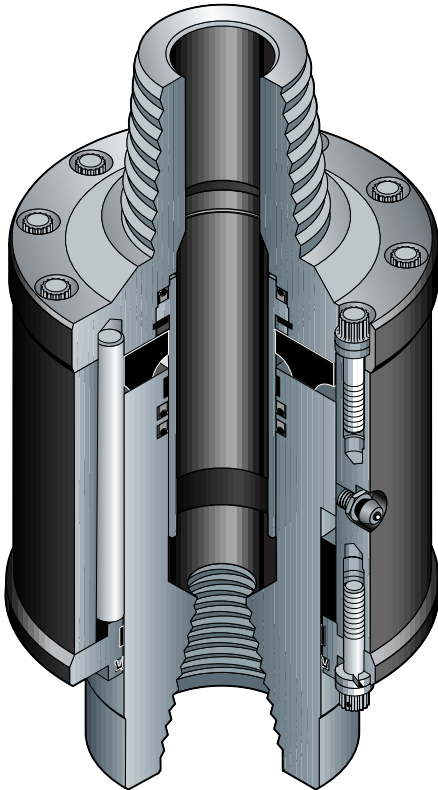
The PD6-2 is utilized on small and mid-range drills for both DTH hammer and rotary drilling applications. In most cases no modifications are required to the drill or drill string.

**FOREMOST**  
[www.foremost.ca](http://www.foremost.ca)

# Floating Cushion Sub

**MODEL  
PD6-2**

**INCREASE PRODUCTION — REDUCE MAINTENANCE**



## Specifications

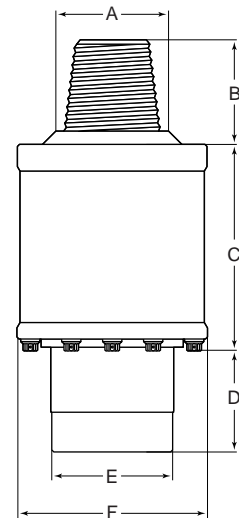
|          |   |
|----------|---|
| Hoist    | 125,000 lbs.  |
| Pulldown | 125,000 lbs.  |
| Torque   | 12,000 ft. lbs.                                       |
| Stroke   | .75 inch (H.D. Cushions)<br>1.75 inch (L.D. Cushions) |
| Weight   | 165 lbs.  |

## Dimensions

|          |       |
|----------|-------|
| A (max.) | 6.75  |
| B        | 4.87  |
| C        | 10.00 |
| D (ret.) | 3.12  |
| (ext.)   | 3.87  |
| E (max.) | 5.87  |
| F        | 9.25  |

Dimensions shown in inches

Shoulder to shoulder length will vary pending thread designation.



## Features

- Multi-pin drive splines
- Floating Spindle
- Upper and lower cushions
- Accessible lubrication fitting
- Threaded connections top and bottom
- Stationary washpipe and seals

## Benefits

- Direct transfer of spindle torque
- Reduction in thread damage
- Shock and vibration is minimized
- Component life is extended
- Minimum maintenance requirements

## Ordering Information

- Drill make and model
- Thread type and size
- Spindle and pipe diameter
- Breakout flat details



**Foremost Industries Inc.** *designs, manufactures and markets all-terrain wheeled and tracked vehicles, drilling rigs, mining tooling and reverse circulation systems for the construction, geophysical, mineral exploration and waterwell industries.*

### Foremost Industries Inc.

1225 - 64th Avenue NE, Calgary, Alberta, Canada T2E 8P9

Tel: 403-295-5800 • Fax: 403-295-5810 • E-mail: marketing@foremost.ca

**1-800-661-9190 Canada/U.S.A.**

**FOREMOST**  
www.foremost.ca